

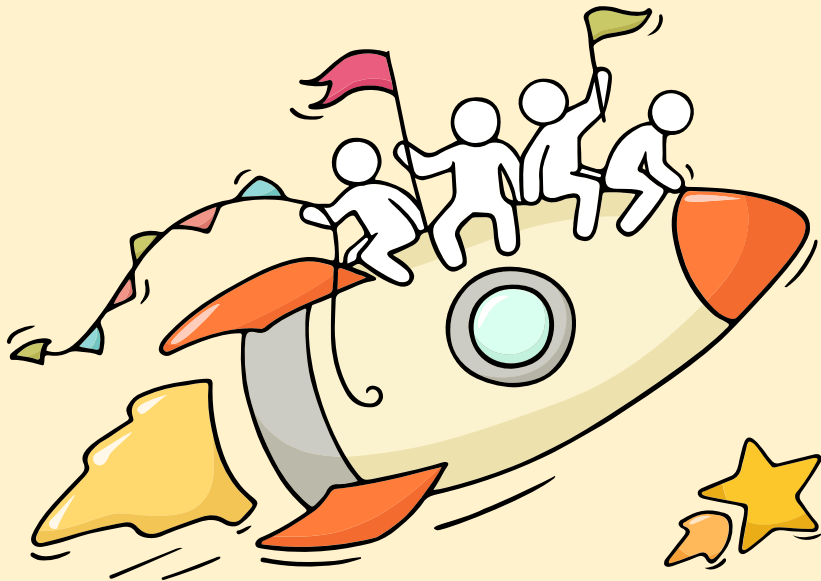
Welcome Back!

Briefing Slides for Release of 2025 N-Level Results



Dear students,

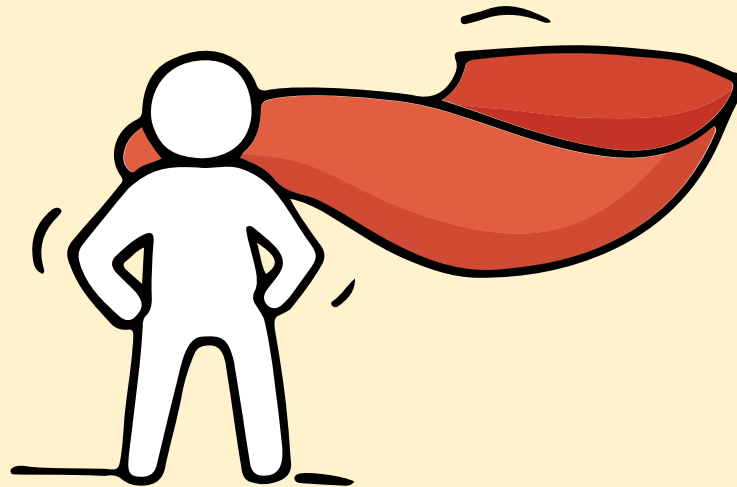
You have worked hard to reach this stage. Let's celebrate your efforts!



*Finally, we are going
to get our results!*



Remember that while **everyone's**
educational journey is different,
we can each have a fulfilling outcome!



Resources to support you as you receive your results

Receiving your results and making decisions about your post-secondary pathways can be exciting to some, but stressful to others.

Scan this QR code for an infographic with some helpful resources to support you.



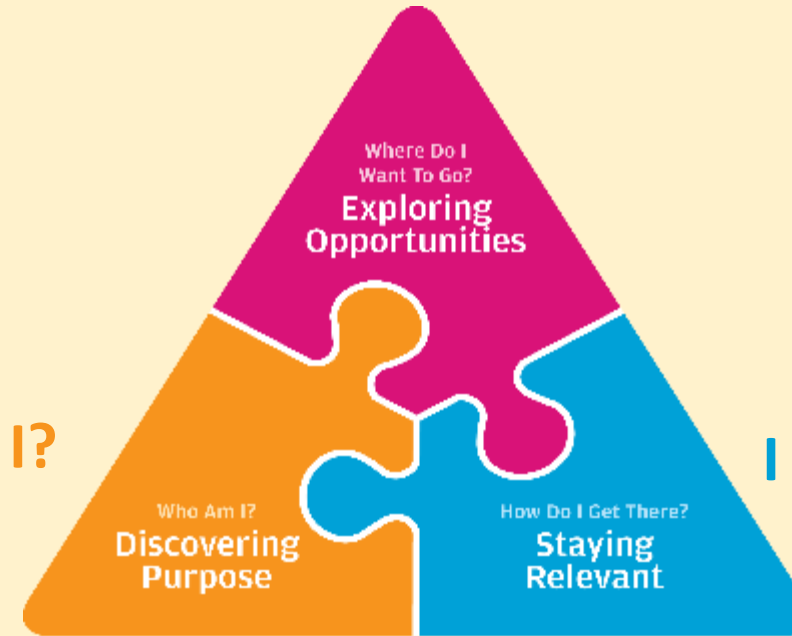
<https://go.gov.sg/2025nlevelstudentresource>



Thinking about Your Next Step?

Consider these questions...

Who am I?



How Do I Get There?

In the infographic, you can find resources which can help you make informed decisions.

PLANNING YOUR NEXT STEP

These resources will help you chart your path ahead:



• What's Next Brochure

<https://go.gov.sg/whats-next-nlevel>



• Contact the ECG Centre @ MOE

<https://go.gov.sg/moe-ecg-centre>



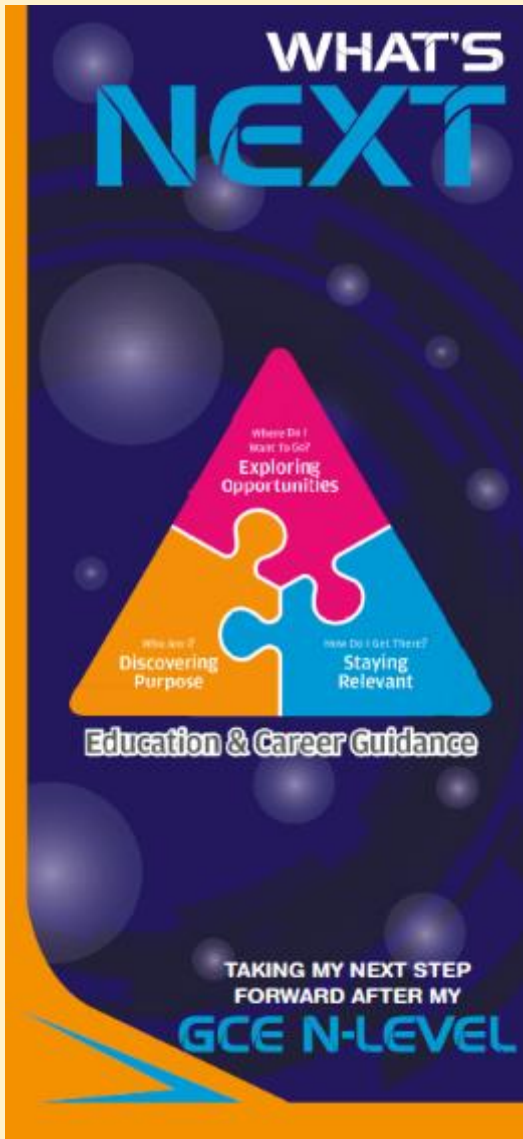
• MySkillsFuture Student Portal

<https://go.gov.sg/MySFSec>



• Chat with your school's ECG Counsellor

Resources to help you make informed decisions



PLANNING YOUR NEXT STEP

These resources will help you chart your path ahead:



- What's Next Brochure
<https://go.gov.sg/whats-next-nlevel>



- Contact the ECG Centre @ MOE
<https://go.gov.sg/moe-ecg-centre>



- MySkillsFuture Student Portal
<https://go.gov.sg/MySFSec>



- Chat with your school's ECG Counsellor



MySkillsFuture Student Portal

Use the information and tools to explore various education and career pathways and take charge of your future.

Resources to help you make informed decisions

You can find the details of the various admissions exercises in the **Post-Secondary Admissions Exercises booklet** that can be downloaded from:

<https://www.moe.gov.sg/post-secondary/admissions>

- Direct-Entry-Scheme to Polytechnic Programme (DPP)
- Polytechnic Foundation Programme (PFP)
- Joint Intake Exercise (JIE) 'N' / 'E'
- NAFA Foundation Programme (NFP)



Resources to help you make informed decisions

Post-Secondary Education

Learn more about the
post-secondary education institutions



<https://moe.gov.sg/post-secondary/overview>

Concerned about your next steps?

Stop

- Calm yourself down. Take a few deep breaths.

Think

- Think through the different options that are available for you.
- Remember that the N-Level is not the end point and is only one part of your life journey.

Do

- Have conversations with trusted adults who know you well to advise and guide you (parents, teachers, ECG Counsellor).
- Decide and act based on your options.

When you receive your results, you may experience a range of emotions.

Managing these emotions well will allow you to stay calm and make rational decisions.

Reaching out for support is a sign of strength

If you have questions about your options or are not coping well, you can reach out to trusted adults such as a parent/guardian, teacher, School Counsellor or ECG Counsellor. You can also talk to a trusted friend.

*Who can we
go to for ECG
advice?*

Make an appointment to speak with
your ECG Counsellor in school

OR

Make an ECG counselling
appointment via the
ECG Centre @ MOE

<https://go.gov.sg/moe-ecg-centre>





Booking of Appointment with ECGC (BVSS)

For N-level Results Release



Ms Evelyn See
ECG Counsellor

1. Slots will be available for **19 & 22 Dec**
2. All sessions will be **online via Google Meet**.
3. You will receive a **confirmation email** on successful booking.
4. **Google Meet details** will be sent to you **via email**, by the morning of the session.

If there are **no more available slots**, you may **make an appointment with the MOE ECG Centre** through **go.gov.sg/moe-ecg-centre**



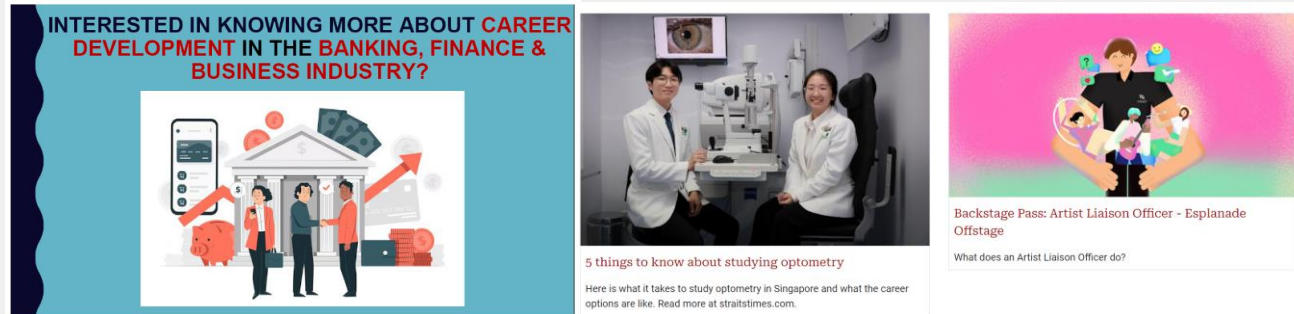
Online booking (via QR code)
(<https://go.gov.sg/ecgbvss-appt>)

One-stop ECG InfoSite

Discover your Purpose | Explore Opportunities | Stay Relevant

Education and Career Guidance (ECG)

An ECG Microsite for students, teachers and parents!



Exciting ECG-related news articles, videos, websites and latest events e.g. career talks/seminars!



<https://go.gov.sg/bvssecgsite>



Useful Websites !

MOE Coursefinder

Website to explore all courses based on aggregate type, score, type of institution and area of interest

JIE 2025 Booklet

Detailed information about JIE and courses

JIE Overview

MOE website – JIE overview, application schedule and process

DPP Overview

MOE website – DPP overview, application schedule and process

PFP Overview

MOE website – PFP overview, application schedule and process



JIE Schedule

Click on the links for the different JIE schedule.

JIE 'N' & 'E' Schedule

JIE 'N': 3-year *Higher Nitec* course (for all students)

JIE 'E': 4-year *Higher Nitec* course with Enhanced Foundation Prog
(for NT students with 0 or 1 'N' Level pass).

JIE 'H' Schedule

JIE 'H' (DPP): 2-year *Higher Nitec* course (for NA students)

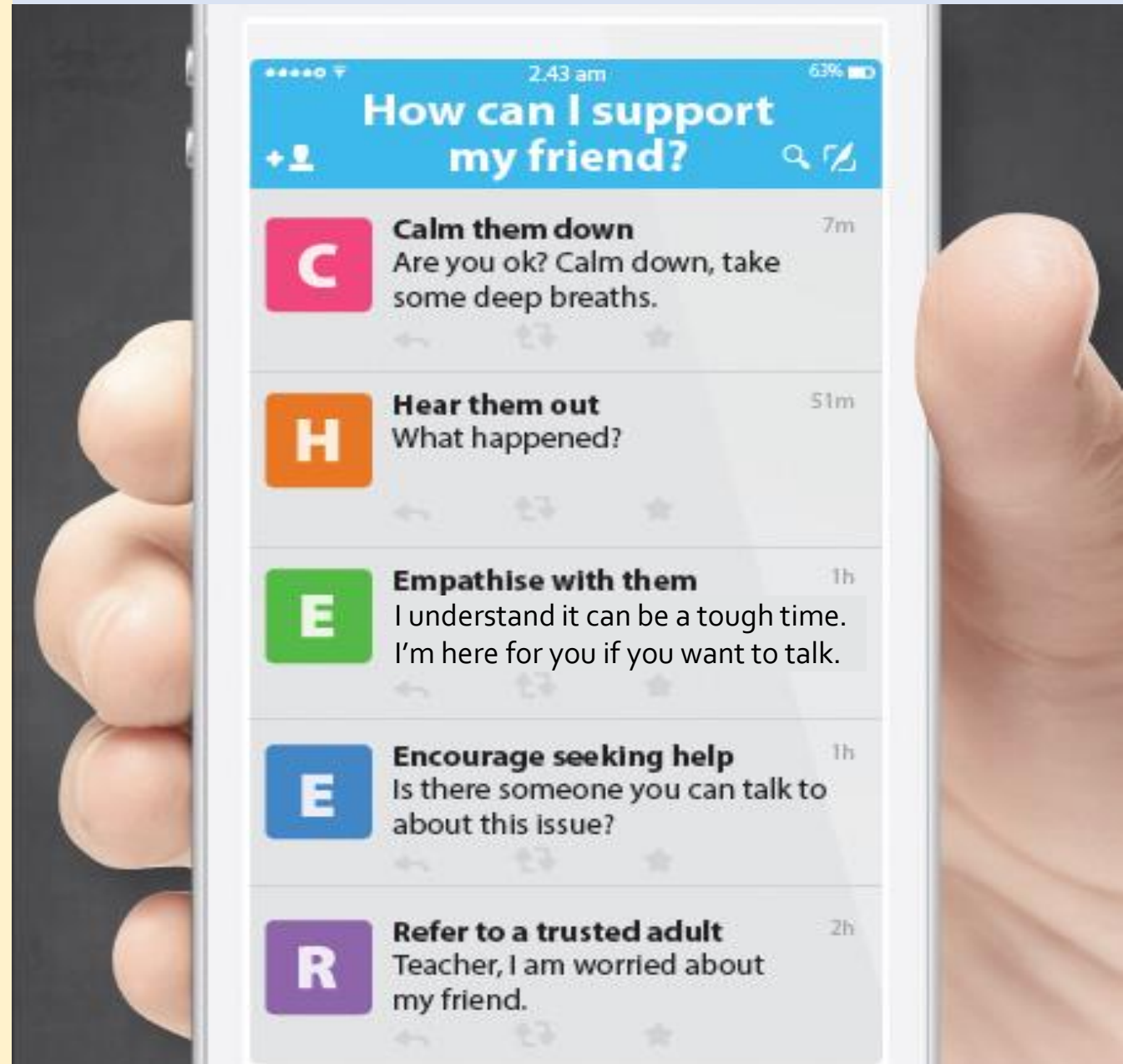


Supporting Your Friend

- We may each experience different emotions upon receiving the results.
- You can share your friends' joy by congratulating them.
- If your friends appear to be disappointed with their results, encourage them.
- Alert a teacher if you are worried for them.



Keep a lookout for your friends in distress. You can support them in the following ways:



Having difficult emotions during a stressful and uncertain period is normal. Keep a look out for some of these signs:

**D
I
S
T
R
E
S
S**

Deliberately avoiding others

Increased irritability, restlessness, agitation, stress and anxiety

Sending or posting moody messages on social media

Talking about death or dying

Reacting differently or gradually losing interest in things they used to like

Eating more than usual or having a much reduced appetite

Sleep pattern changes with difficulty falling asleep or oversleeping

Slowing down of energy levels

If you notice any of these signs in yourself or your friends,
have a chat with your School Counsellor or teacher,

Or contact SOS 24-hour hotline at **1767** or SOS 24-hour CareText Whatsapp at **91511767**
For cyber wellness related matters, call Help123 at **1800-612-3123*** or email **hello@help123.sg**

*available only from Mon to Fri (excluding Public Holidays), from 9am - 6pm.



© 2023 Guidance Branch, Student Development Curriculum Division (SDCD), Ministry of Education, Singapore. No part of this final product may be reproduced or transmitted in any form or by any means, electronic or mechanical, including photocopying, recording or any other information storage and retrieval system, without written permission from SDCCD, MOE.

**Keep a lookout for
some of these signs in
your peers or in
yourself**

*How can we
support one
another?*



Support is readily available for you.

There are other hotlines and chats available if you are more comfortable seeking help using these platforms.

SOS provides round-the-clock emotional support for those in distress, thinking of suicide or affected by suicide.

Call: **1767**
(24-hour helpline)

WhatsApp: **9151 1767**
(24-hour Care Text)

Carey is an online platform by Care Corner that provides free mental health check-ins with mental health professionals. Find out more at: <https://carey.carecorner.org.sg/>

Community Health Assessment Team (CHAT) provides personalised and confidential mental health checks and consultation for youths. To speak with a youth support worker, you can:

Visit: **CHAT Hub at *Scape, 2 Orchard Link, #04-01A**
Call: **6493 6500 / 6501**
Email: chat@mentalhealth.sg

eC2 is an e-Counselling Centre where you can talk to a trained counsellor about the issues you are facing, right where you are.

Chat with a counsellor at: www.ec2.sg
Monday – Friday (Excluding Public Holidays): 10am – 12pm & 2pm – 5pm

Mindline is Singapore's national mental health helpline and textline service. The service is manned by trained counsellors who are ready to listen and support you.

Call: **1771**
(24-hour helpline)
WhatsApp: **6669 1771**
(24-Hour messaging service via WhatsApp)

TOUCHline is a helpline to provide youths with emotional support and practical advice.

Call: **1800 377 2252**
Monday- Friday (Excluding Public Holidays): 9am – 6pm





**The N-Level examination is
one milestone in your
education journey, and
there are many more
exciting pathways ahead.**

**Your future holds many
opportunities waiting to be
discovered!**

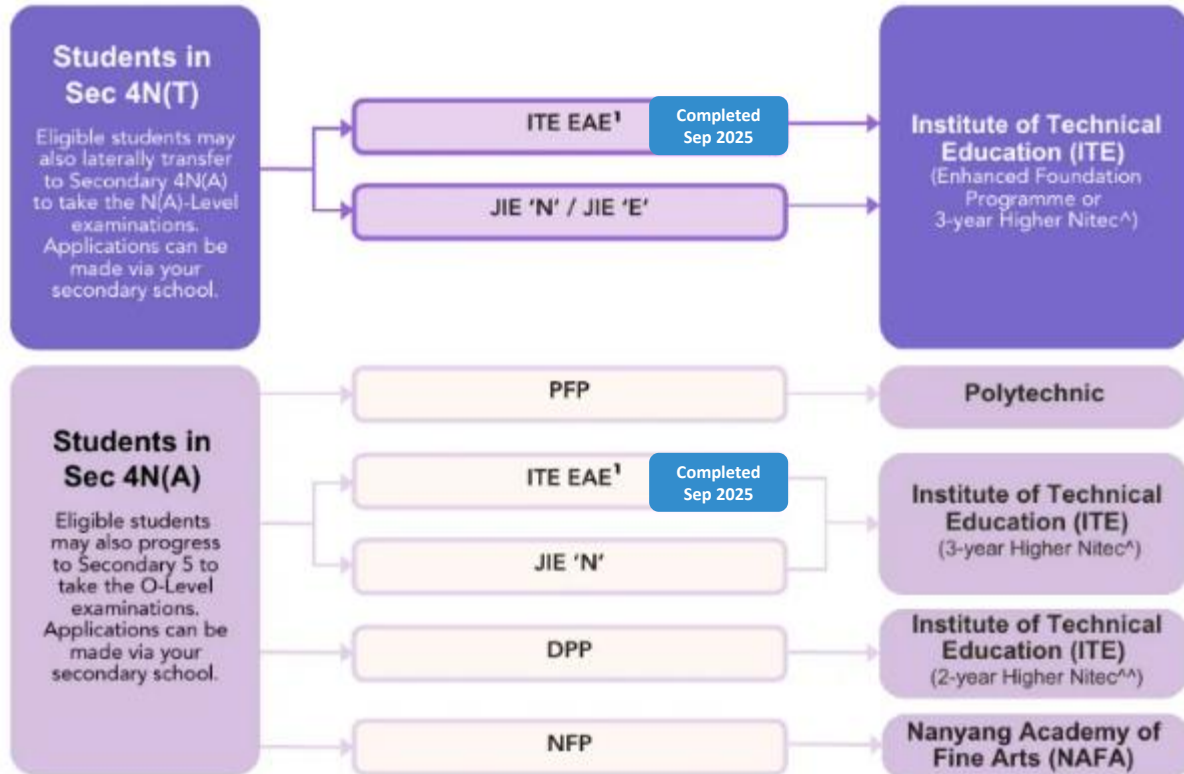
Admissions Exercises

Things to note



Post-Secondary Admissions Exercises for Students in Sec 4 Normal (Technical) and Normal (Academic)

Admissions exercises to take part in



Source: [Post-Secondary Admissions Exercises booklet](#)

¹ Students apply through these admissions exercises before their examinations.

[^]For the list of 3-year Higher Nitec courses, please visit <https://www.ite.edu.sg/secondary-school-students/ite-full-time-courses/3-year-4-year-higher-nitec>



^{^^}For the list of 2-year Higher Nitec courses under the DPP, please visit <https://www.ite.edu.sg/secondary-school-students/ite-full-time-courses/higher-nitec-for-dpp>



Details of Admissions Exercises

PFP – Polytechnic Foundation Programme

PFP is a one-year programme that offers a practice-oriented curriculum taught by polytechnic lecturers to better prepare polytechnic-bound Secondary 4N(A) students for entry into a polytechnic diploma.

Starting from the AY2026 PFP intake, students will be admitted into a PFP cluster, and progress to one of the diplomas within the cluster after completing the one-year programme.

The exceptions are Diploma in Nursing, Diploma in Early Childhood Development & Education, and Diploma in Tamil Studies with Early Education, for which students can be admitted either via the diploma-specific PFP or the relevant PFP cluster.

PFP: go.gov.sg/pfp

DPP – Direct-Entry-Scheme to Polytechnic Programme

DPP allows Secondary 4N(A) students to be admitted directly into selected 2-year Higher Nitec courses at ITE without having to sit for the O-Level examinations. DPP students who successfully complete their Higher Nitec courses at ITE and attain the required qualifying Grade Point Average (GPA) scores are guaranteed a place in a polytechnic diploma course mapped to their Higher Nitec course.

DPP: go.gov.sg/applydpp

NFP – NAFA Foundation Programme

The NFP is a one-year practice-based programme that prepares Secondary 4N(A) students to pursue a diploma in the creative arts. NFP students who successfully complete the programme will be offered a place in their chosen diploma course at NAFA.

NFP: go.gov.sg/applynafafp

Details of Admissions Exercises

JIE 'N'/JIE 'E' – Joint Intake Exercise

The JIE 'N' is for students to apply for the 3-year Higher Nitec courses offered by ITE.








The JIE 'E' is for eligible¹ GCE N(T) students to apply for the 4-year Higher Nitec course under the Enhanced Foundation Programme.

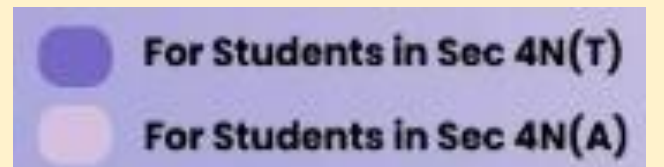
JIE 'N'/JIE 'E': go.gov.sg/applyjien

NOTES

¹Singaporean/ Singapore Permanent Resident Normal (Technical) holders with '0' or '1' GCE 'N' Level pass.

Application Period

Application Period	Dec 2025	Jan 2026
Admissions Exercises	JIE 'N'   JIE 'E'  DPP (1 st window of applications)  NFP 	PFP  DPP (2 nd window of applications) 



Additional resources to help you make informed decisions



About Discover On My Way:

Discover your **education and career interests** and **chart your personal and professional future** with Discover On My Way! **Explore** different careers, **connect** with industry professionals and peers, and **get firsthand exposure** at various job roles. *Let's get you on your way to Discover-ing!*

What to study?
What career to pursue?

Still figuring out your future?

Join programmes organised by NYC and our partners to meet professionals from various industries & youth on the same journey as you.



Learning Journey to
*SCAPE & ChaPanda



SEAcret Gatherings



Industry Connects With Grab SG



<https://discover.nyc.gov.sg/omw>

For Students Considering Private Education



The 3Rs when deciding on Private Education

Reasons

- Why are you furthering your studies?
- What are the job prospects for your preferred course?

Readiness

- How ready are you to further your studies?
- Can you cope with the academic rigour and assignment deadlines?
- Can you fund your studies?

Risks

- Do you know the possible drawbacks?
 - Your expected returns may not exceed the investments you put into your private education.
 - Private schools may make exaggerated claims.
 - Private schools may close due to various reasons.
 - You may not get a full refund if you withdraw from your course.



8 Things You Should Know Before You Enroll in A Private School



School Registration

Ensure the school is registered with SkillsFuture Singapore (SSG). Review the school's registration period, expiry date and its overall registration track record.



Partner Institution

Research on the partner institution conferring the diploma or degree, and whether the qualification is recognised by the industry.

EduTrust Certification Scheme

Is the school EduTrust-certified*? Under the scheme, private schools are assessed for their performance in areas such as school management and provision of student support services.

**Schools are required to obtain EduTrust certification in order to offer external degree programmes*



School Premises

Head down to the campus ground to check the facilities and support services. Observe the study environment too.



Fee Protection

Ask if there is any course fee protection so that you will be able to recover unconsumed course fees should the school close down.



Beyond Course fees

Find out about the course syllabus and materials, graduation rates and employment prospects. Approach the alumni to find out what they think of the school.

Teachers

Check if the teachers are qualified to teach the course.



Internship

If industry attachment is included, find out which organisation you will be attached to, the period of attachment and the alternative arrangement should the attachment become unavailable. Verify the information with the organisation as well.



Summary of Key Information



Computing Aggregate Scores

Grade conversion for N(A) students who sat for GCE O-Level examinations.

O-Level Grade	N-Level Grade
A1, A2, B3	1
B4, C5, C6	2
D7	3
E8	4

Note: O-Level grade 9 does not count towards either the ELMAB3 aggregate score computation or in determining if minimum entry requirements for the PFP course have been met.

Instructions to Students

IMPORTANT

ALL students are to acknowledge the collection of the following items on the name list:

- GCE N-Level Result Slip
- GCE N-Level Certificate
- Form N (if applicable)

Check that your mobile number is correct.

Instructions to Students

All students are to submit your indication of progression options after the release of GCE N-Level Results using the link below.

Deadline is **Fri, 19 Dec 2025, 5pm (prospective 5N)**
Sat, 27 Dec 2025, 5pm (others)

<https://go.gov.sg/2025-4nprogression>

The purpose of this form is for the school to collate all progression options and to plan for students who wish to progress to Secondary 5. The school is also required to update MOE of all students' post-secondary options.

Key Dates for Jan 2026 Intake Exercise

Key Activity	Period for 3-Year and 4-year Higher Nitec courses	Remarks
<u>1st Phase (Main Phase)</u>		
Application	18 Dec 2025 (2.30pm) to 22 Dec 2025 (5pm)	Apply through the Internet at https://www.ite.edu.sg/intake-exercises/ with SingPass.
Release of Results	26 Dec 2025 (9am)	Check results at https://istudent.ite.edu.sg with web ID and password
Acceptance of Course Offer Period	26 Dec 2025 to 2 Jan 2026	Accept course offer at https://istudent.ite.edu.sg with web ID and password
<u>2nd Phase (Late Application/Appeal Phase)</u>		
Application	26 Dec 2025 to 2 Jan 2026	Apply through the Internet at https://www.ite.edu.sg/intake-exercises/ with SingPass.
Release of Results	6 Jan 2026	Check results at https://istudent.ite.edu.sg with web ID and password
Acceptance of Course Offer Period	6 Jan 2026 to 9 Jan 2026	Accept course offer at https://istudent.ite.edu.sg with web ID and password
<u>3rd Phase (Final Top-up Phase)</u>		
Application	1 st Top-up Phase Application - 9 Jan to 16 Jan 2026 2 nd Top-up Phase Application - 22 Jan to 6 Feb 2026	Apply through the Internet at https://www.ite.edu.sg/intake-exercises/ with SingPass.
Release of Results	1 st Top-up Phase - 12 Jan to 22 Jan 2026 2 nd Top-up Phase - 22 Jan to 11 Feb 2026	Check results at https://istudent.ite.edu.sg with web ID and password
Acceptance of Course Offer Period	1 st Top-up Phase - 12 Jan to 22 Jan 2026 2 nd Top-up Phase - 22 Jan to 11 Feb 2026	Accept course offer at https://istudent.ite.edu.sg with web ID and password

Jan 2025 Intake Term Commencement Date: **12 Jan 2026**

Information For Students on Key Dates for Jan 2026 intake

1. All N(A)* / N(T) school leavers are encouraged to submit an application during the **1st Phase (Main Phase)** between **18 Dec 2025 (2.30 p.m.) to 22 Dec 2025 (5 p.m.)**. Application results for the 1st Phase will be released on **26 Dec 2025 from 9 a.m.**
2. If you wish to appeal, please accept the course offered **before** applying in the **2nd Phase (Late Application/Appeal Phase)** between **26 Dec 2025 to 2 Jan 2026**. The application results for the 2nd Phase will be known on **6 Jan 2025 from 9 a.m.**
3. Unsuccessful applicants can appeal under the **3rd Phase (Final Top-up Phase)** between **9 Jan and 16 Jan 2026 and 22 Jan to 6 Feb 2026** for courses with vacancies. The application results for the 3rd Phase will be known between **12 Jan and 22 Jan 2026** and **22 Jan and 11 Feb 2026**.

*N(A) students progressing to ITE

Key Pointers for Students on ITE's Joint Intake Exercise (JIE)

ALL students in N(T) and N(A) students (who are not progressing to 5N(A) or repeating 4N(A)) are eligible for JIE.
Those who were unsuccessful in EAE are also eligible for JIE.

Apply in the 1st JIE main phase in December.

Use all 12 JIE choices wisely, as competition for 3-year Higher Nitec courses is keen!

Do consult your teachers / ECG counsellors to help you make your choices!

Do use the Last Aggregate Score (LAS) published in ITE's admission portal to help you make your course choices.

You are eligible for Enhanced Foundation Programme (EFP) if you receive an invitation letter to the EFP addressed to you and a copy of invitation letter for your parent/guardian.

If you are eligible for EFP, make sure you apply for both the 4-Year and 3-Year Higher Nitec Course.

The EFP helps to build the necessary literacy and numeracy foundations!

If you are counter-offered a course, accept it first to secure a place in ITE, before appealing for another course you may be more interested in!

STEP-BY-STEP INFORMATION FOR JIE APPLICATION


Online Application for


3-Year Higher Nitec Courses

4-year Higher Nitec Course with EFP

(for N(T) students with 0, 1 “N” pass)

1. Go to <https://www.ite.edu.sg/intake-exercises/>

2. Under JIE ‘N’, click  icon to link to the application website

Under JIE ‘E’, click  icon to link to the application website

3. At the application website:

- a) Use your Singpass to access the application portal.
- b) Upon completion of application, applicants will receive their web ID and password.

STEP-BY-STEP INFORMATION FOR JIE APPLICATION

Checking of Posting Results/Accept Course Offer

3-Year Higher Nitec Courses

4-year Higher Nitec Course with
EFP

(for N(T) students with 0, 1 "N" pass)

1. Go to <https://istudent.ite.edu.sg>.
2. Enter web ID and password.
3. Click '**Self-Service**' followed by '**Student Admission**' followed by '**View Application Results**' to view the application results and to accept course offer.

The above steps applies to all phases (refer to Slide 11 for dates).
For more details, please refer to ITE website.

RESOURCES FOR STUDENTS

Additional Information For Students

Should you require further advice or assistance in your applications or future plans, please contact your teachers and/or ECG Counsellor.


For further inquiries, you may refer to the following hotlines and links for more information and advice on further education:

Institute of Technical Education (ITE)	
ITE Hotline (for ITE admissions and courses)	1800 2222 111 training@ite.edu.sg
ECG Centre @ MOE	
e-Appointment link	https://go.gov.sg/moe-ecg-centre

RESOURCES FOR STUDENTS

Additional Information For Students

The information listed in the table below will help you to make an informed decision on which choice of courses you could consider applying at ITE.

S/N	Information	Attachment/Link
1	ITE Factsheet 2025	 2025 JIEN Factsheet
2	ITE Course Booklet 2026	ITE-Course-Booklet-2025.pdf
3	Information on Progression Opportunities (From <i>Nitec</i> Courses to <i>Higher Nitec</i> and Technical diplomas)	https://www.ite.edu.sg/current-full-time-students/progression/
4	Information on Progression Opportunities (from <i>Higher Nitec</i> courses to diploma courses)	https://www.ite.edu.sg/secondary-school-students/admissions/academic-progression/academic-progression-from-full-time-higher-nitec/

Key Dates for Jan 2026 Intake Exercise

Key Activity	Period for Direct-Entry-Scheme to Polytechnic Programme (DPP)	Remarks
Application	18 Dec 2025 (2.30pm) to 22 Dec 2025 (5pm)	Apply through the Internet at https://www.ite.edu.sg/intake-exercises/ with SingPass.
Release of Results	26 Dec 2025 (2pm)	Check results at https://istudent.ite.edu.sg with web ID and password
Acceptance of Course Offer Period	26 Dec 2025 to 2 Jan 2026	Accept course offer at https://istudent.ite.edu.sg with web ID and password School candidates who do not have a confirmed place in the DPP should report to their secondary schools in 2026 for Secondary 5.
Jan 2025 Intake Term Commencement Date: <u>12 Jan 2026</u>		

Key Activity	Period for Polytechnic Foundation Programme (PFP)	Remarks
Application	On the day of GCE O-Level results release	School candidates interested in applying for PFP should report to their secondary schools in 2026 to start their Secondary 5 year, while awaiting notification of eligibility and confirmation of a place in the PFP. Eligible candidates will receive a copy of Form P on the day of the GCE O-Level results release.

Key Dates for Jan 2026 Intake Exercise

Key Activity	Progression to 2026 Secondary 5 or repeat 4N(A)
Application	<p>Complete https://go.gov.sg/2025-4nprogression by 19 Dec 2025.</p> <p>Attend compulsory briefing session on <u>19 Dec 2025, 9am</u> at the <u>Design Studio</u>.</p> <p>Report to school for Secondary 5 or 4N(A) when school reopens if application has been approved.</p>

Please note:

- All students who **only** intend to progress to Sec 5N (without choices to DPP, H-Nitec, Nitec) will have to **attend a briefing** by Mr Aziz on 19 Dec at 9am.
- Those who have indicated a desire to repeat, will also need to **arrange a meeting** with Mr Aziz by 23 Dec.



Ministry of Education
SINGAPORE