

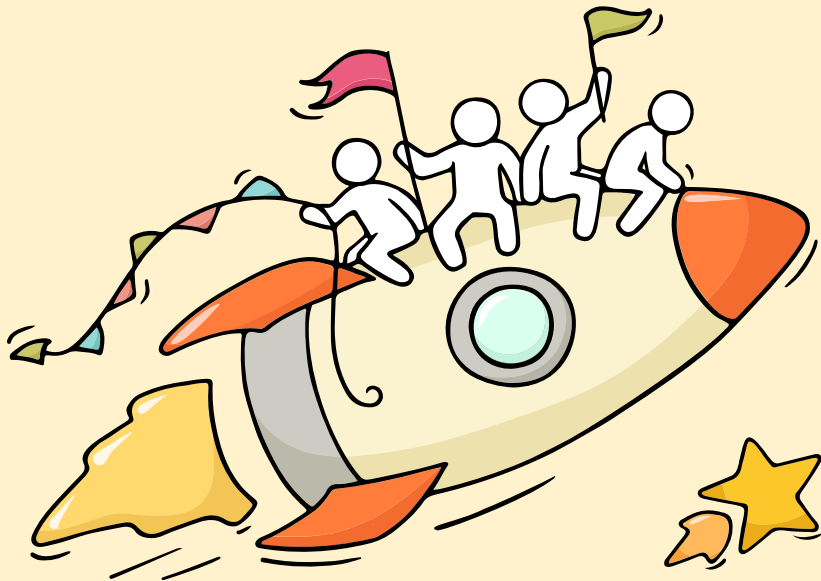
Welcome Back!

Release of 2023 N-Level Results



Dear students,

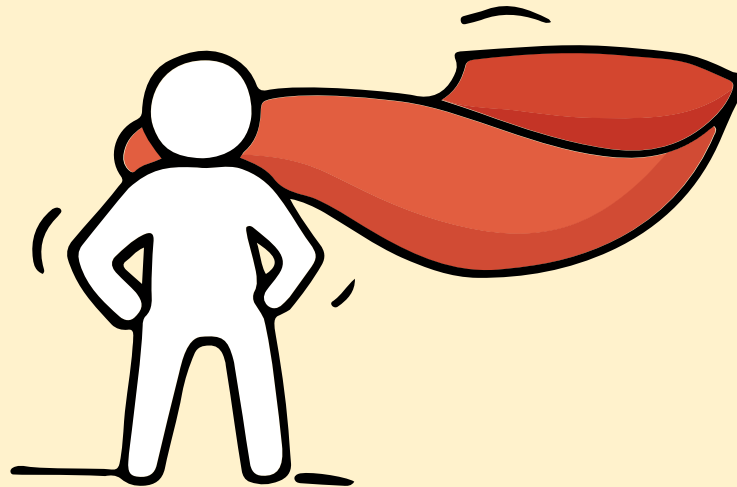
You have worked hard to reach this stage. Let's celebrate your efforts!



*Finally, we are going
to get our results!*



Remember that while **everyone's educational journey is different,**
we can each have a fulfilling outcome!



Thinking about Your Next Step?

Consider these questions!

Where do I want to go?

Who am I?



How Do
I Get There?

Resources to help you make informed decisions



MySkillsFuture Student Portal

A one-stop portal that empowers you to embark on a journey of self-discovery and make informed education and career choices.

Use the information and tools to explore various education and career pathways and take charge of your future.

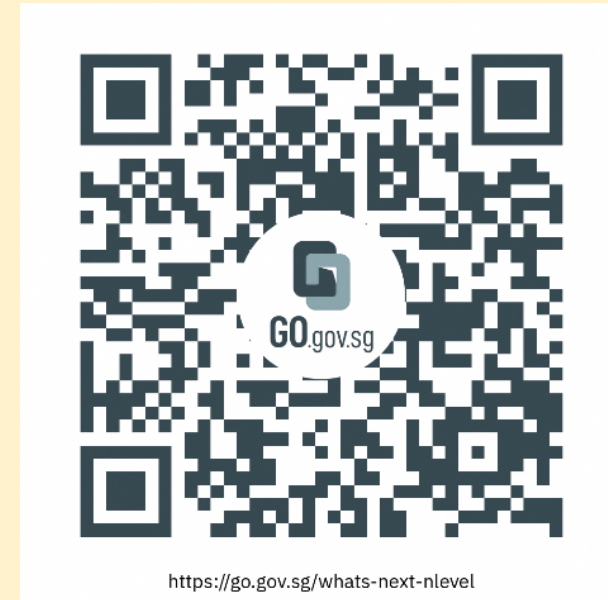
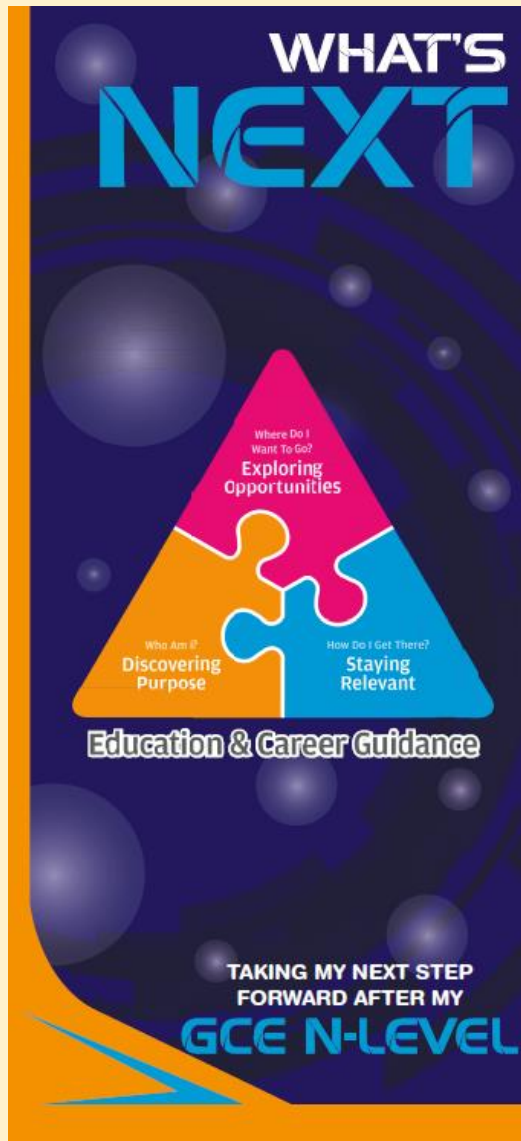
Where can we find more information?



<https://go.gov.sg/mySFsec>



Resources to help you make informed decisions



<https://go.gov.sg/whats-next-nlevel>

Resources to help you make informed decisions

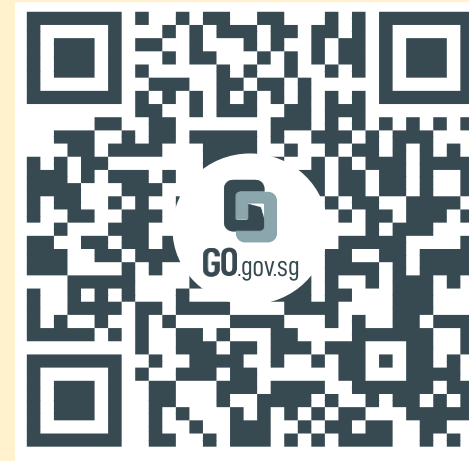
Post-Secondary Education

Learn more about the
admissions exercises and
programmes



<https://moe.gov.sg/post-secondary/admissions>

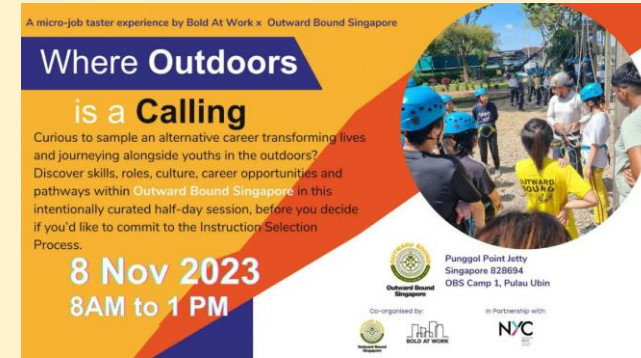
Learn more about the
post-secondary education
institutions



<https://moe.gov.sg/post-secondary/overview>

Resources to help you make informed decisions

Explore different jobs and industries with On My Way (OMW).
Find out if your career goal and educational pathway match your interests, values
and ambitions. <https://www.nyc.gov.sg/omw/home>



KNOW IT ALL
provides consolidated
information about different
jobs and industries - key
responsibilities, skills, career
paths and more!

DAY IN THE LIFE
takes you into the lives of
different professionals and
give you a glimpse of their
jobs and what it entails
through the medium of
videos.

TASTER PROGRAMMES
are micro-experiences of different
job roles that allow you to get a
taste of working life and help you
decide what to study to achieve
your career aspirations!

Concerned about your next steps?

Stop

- Calm yourself down. Take a few deep breaths.

Think

- Think through the different options that are available for you. Keep things in perspective.
- Remember that the N-Level is one part of your life journey and not the destination.

Do

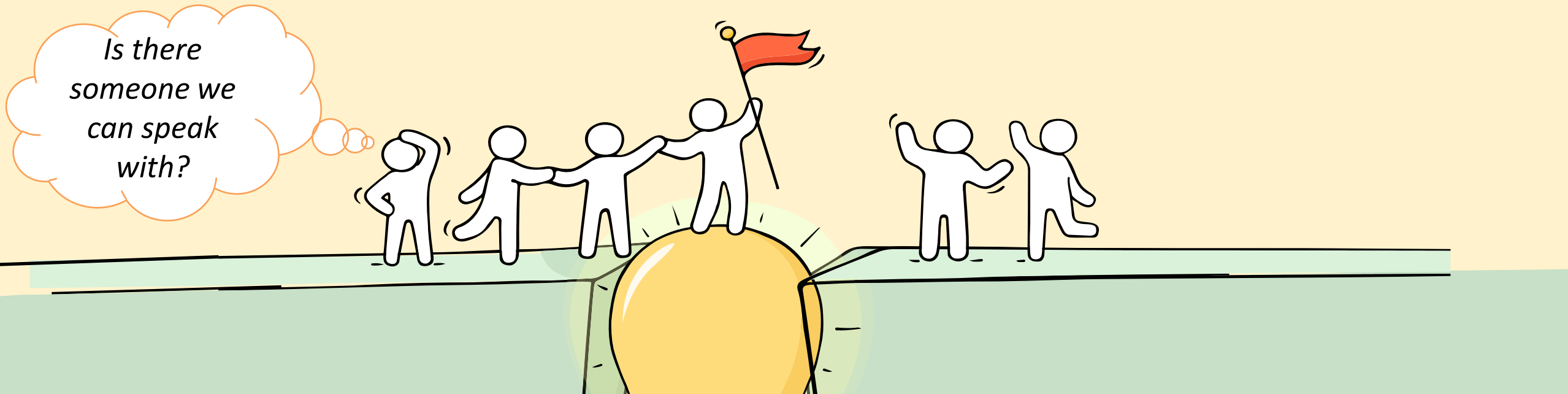
- Approach a trusted adult and seek his/her help. Have a conversation with this person about what would be best for you.
- Make a decision and take action based on your options.

When you receive your results, you may experience a range of emotions.

Managing these emotions well will allow you to stay calm and make rational decisions.

Reaching out for help is a sign of strength, not weakness.

If you have any questions about your options or are not coping well, do reach out to someone you trust and speak with them. It could be a parent/guardian, teacher, ECG Counsellor, School Counsellor or a friend that you can talk to.



Support is readily available for you.

Reach out to an ECG Counsellor!

*Who can we go
to for ECG
advice?*

Make an appointment to speak
with our school's ECG Counsellor,
Mdm Siti,

OR

Make an ECG counselling
appointment via the
ECG Centre @ MOE (Grange Road)
at

<https://go.gov.sg/moe-ecg-centre>



Zoom: 18 to 21 Dec
F2F: 20 & 21 Dec
@BVSS Library



Keep a lookout for some of these signs in your peers or in yourself

*How can we
support one
another?*



D

Deliberately avoiding others

I

Increased irritability, restlessness, agitation, stress and anxiety

S

Sending or posting moody messages on social media

T

Talking about death or dying

R

Reacting differently or gradually losing interest in things they used to like

E

Eating more than usual or having a much reduced appetite

S

Sleep pattern changes with difficulty falling asleep or oversleeping

S

Slowing down of energy levels

If you notice any of these signs in yourself or your friends,
have a chat with your school counsellor or teacher
Or contact SOS 24-hour hotline at **1-767** or **1800-221-4444**

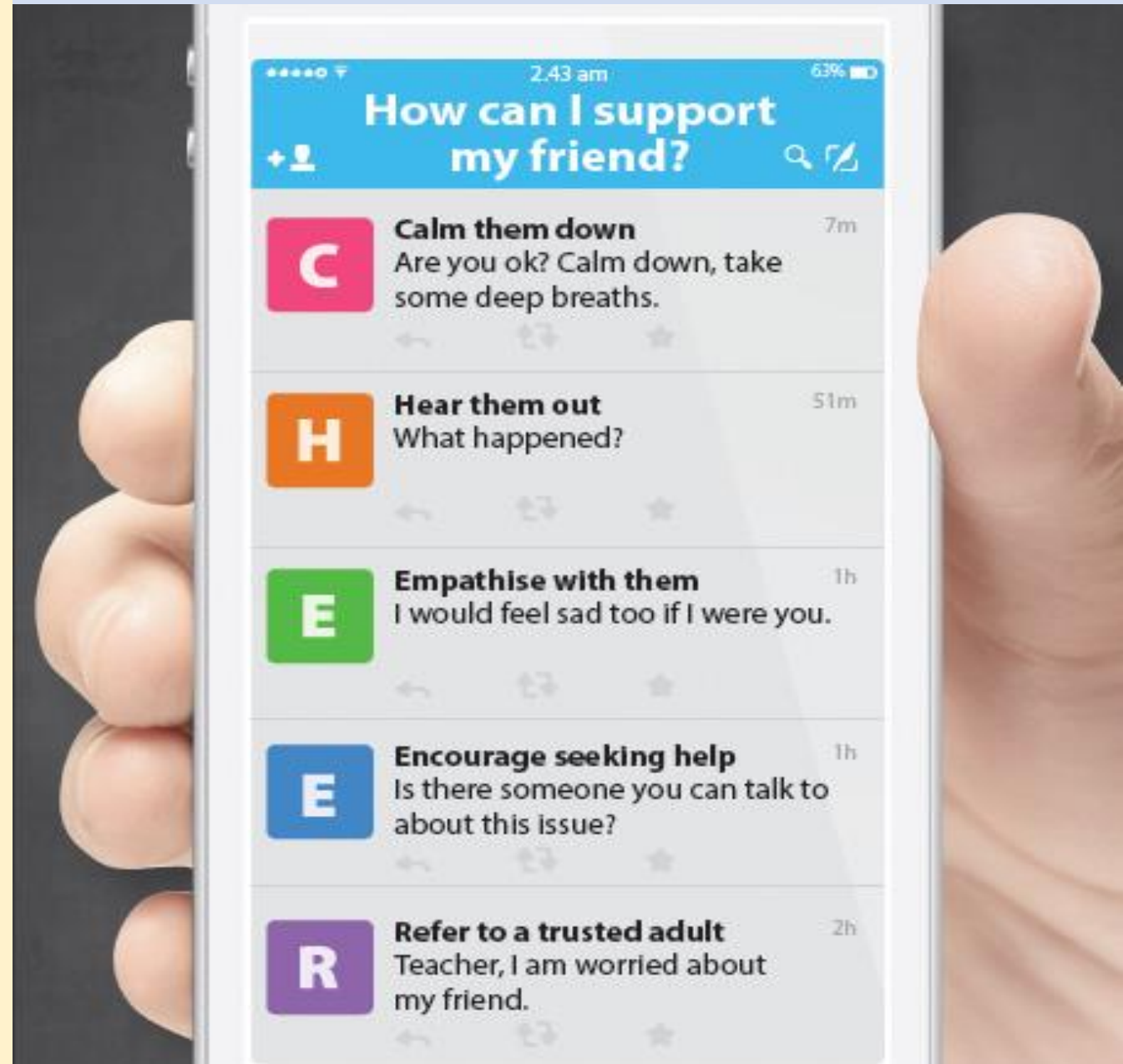


Supporting Your Friend

We may each experience different emotions upon receiving the results. You can share your friends' joy by congratulating them or give words of encouragement to friends who may be disappointed with their results.



Keep a lookout for your friends in distress. You can support them in the following ways:



Support is readily available for you.

There are other hotlines and chats available if you are more comfortable seeking help using these platforms. Scan the QR code below for a helpful resource.



SOS provides round-the-clock emotional support for those in distress, thinking of suicide or affected by suicide.

Call: **1767**
(24-hour helpline)

Whatsapp: **9151 1767**
(24-hour Care Text)

TOUCHline is a helpline to provide youths with emotional support and practical advice.

Call: **1800-377 2252**

Monday- Friday (Excluding Public Holidays):
9am – 6pm

Community Health Assessment Team

(CHAT) provides personalised and confidential mental health checks and consultation for youths. To speak with a youth support worker, you can:

Visit: **CHAT Hub at *SCAPE, #05-05**

Call: **6493 6500/ 6501**

Email: **CHAT@mentalhealth.sg**

Carey is an online platform by Care Corner that provides free mental health check-ins with mental health professionals. Find out more at:
<https://carey.carecorner.org.sg/>

mindline.sg is an online platform that provides tools, tips and resources to help you manage your health and well-being. Find out more at:
www.mindline.sg



eC2 is an e-Counselling Centre where you can talk to a trained counsellor about the issues you are facing, right where you are.

Chat with a counsellor at:

www.ec2.sg

Monday – Friday (Excluding Public Holidays):
10am – 12pm & 2pm – 5pm

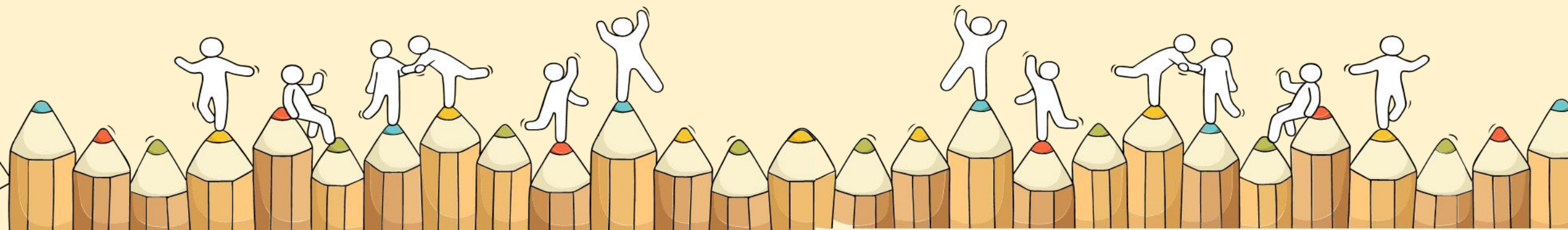


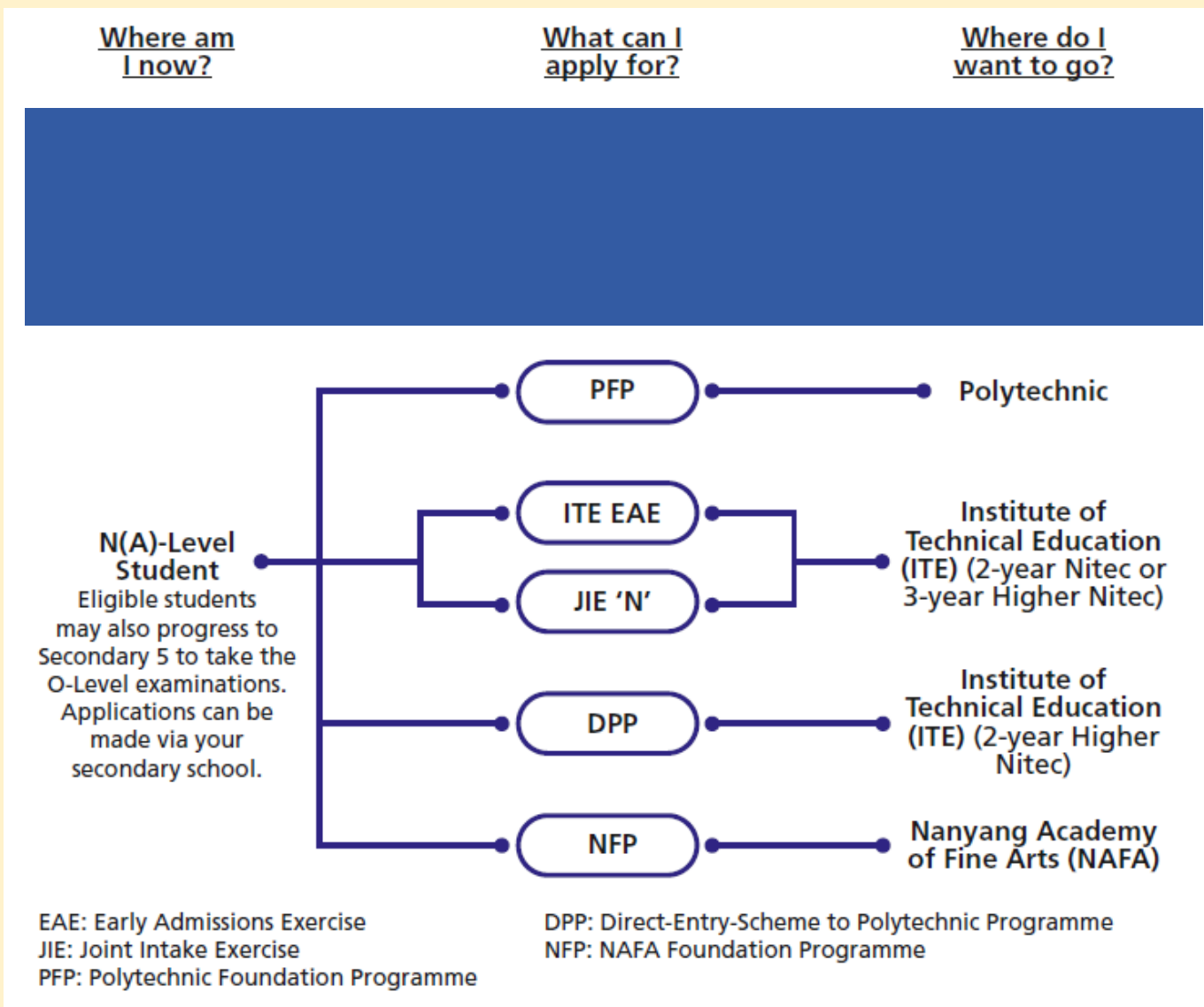
**The N-Level
examination is not
the destination.**

**It is part of your
education journey.**

Admissions Exercises

Things to note





<https://www.moe.gov.sg/post-secondary/admissions>

For more information on applying to these courses, you can visit

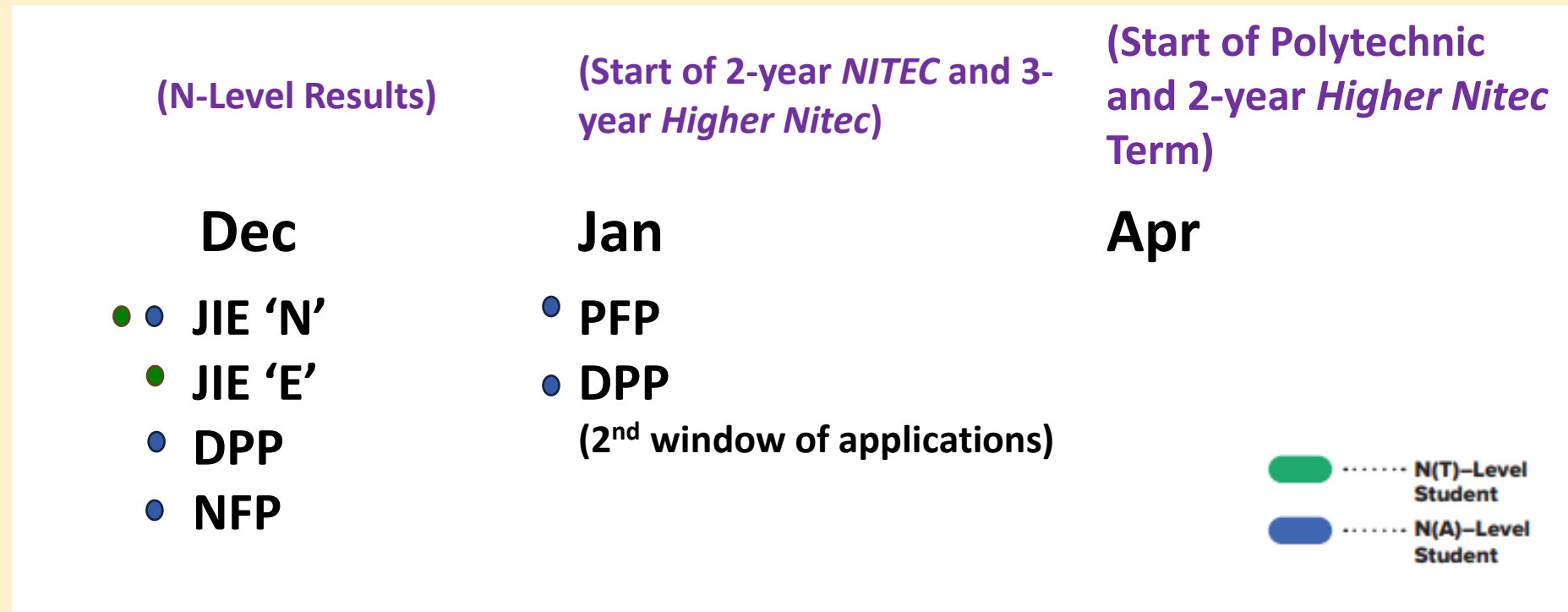
<https://ite.edu.sg/admissions/traineeship>

For the list of 3-year Higher Nitec courses, please visit

<https://www.ite.edu.sg/courses/full-time-courses/nitec-and-3-year-higher-nitec>

Selected Nitec and Higher Nitec courses are available in traineeship mode.

Admissions Exercises Application Timeline



Details of Admissions Exercises





JIE 'N'/JIE 'E' – Joint Intake Exercise

The JIE 'N' is for 2-year *Nitec* or 3-year *Higher Nitec* courses offered by ITE.

The JIE 'E' is for GCE N(T) students to apply for the 3-year *Nitec* course with Enhanced *Nitec* Foundation Programme.



go.gov.sg/applyjie

-  N(T)–Level Student
-  N(A)–Level Student

Details of Admissions Exercises

PFP – Polytechnic Foundation Programme

PFP is a one-year programme that offers a practice-oriented curriculum taught by polytechnic lecturers to better prepare polytechnic-bound Secondary 4 N(A) students for entry into selected polytechnic diploma courses. PFP students are given provisional places in diploma programmes, subject to them passing all modules in the one-year programme.



go.gov.sg/pfp

DPP – Direct-Entry-Scheme to Polytechnic Programme

DPP allows Secondary 4N(A) students to be admitted directly into selected 2-year *Higher Nitec* programmes at ITE without having to sit for the O-Level examinations or undergo a *Nitec* programme. DPP students who successfully complete their *Higher Nitec* courses at ITE and attain the required qualifying Grade Point Average (GPA) scores are guaranteed a place in a polytechnic diploma course mapped to their *Higher Nitec* course.





go.gov.sg/applydpp

NFP – NAFA Foundation Programme

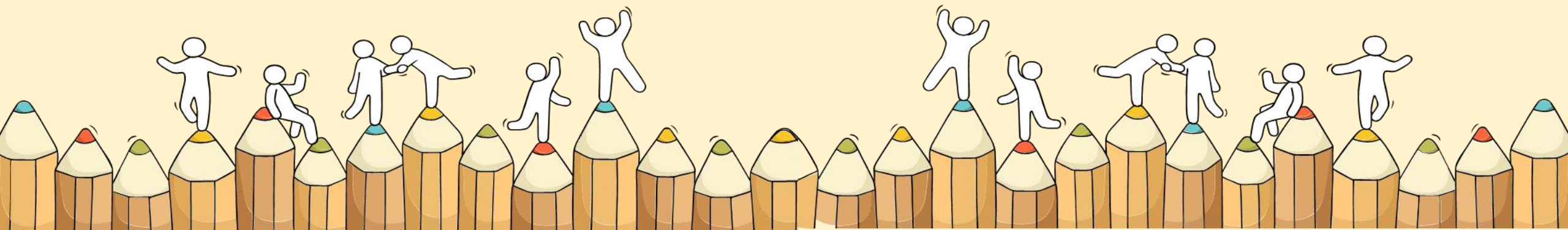
NFP is a one-year practice-based programme that prepares N(A)-Level holders to pursue a diploma in the creative arts. NFP students who successfully complete the programme will be offered a place in their chosen diploma course at NAFA.



go.gov.sg/nafa-applynow

-  **N(T)–Level Student**
-  **N(A)–Level Student**

For Students Planning for Private Education



The 3Rs when deciding on Private Education

Reasons

- Why are you furthering your studies?
- Is this for better job prospects?

Readiness

- How ready are you to further your studies?
- Can you cope with the academic rigour and assignment deadlines?
- Can you fund your studies?

Risks

- Do you know the possible drawbacks?
- Your expected returns may not exceed the investments you put into your private education.
- Private schools may make exaggerated claims.
- Private schools may close due to various reasons.
- You may not get a full refund if you withdraw from your course.

<https://go.gov.sg/3rs>



8 Things You Should Know Before You Enrol in A Private School

School Registration



Ensure the school is registered with CPE. Review the school's registration period, expiry date and its overall registration track record.

Partner Institution



Research on the partner institution conferring the diploma or degree, and whether the qualification is recognised by the industry.

EduTrust Certification Scheme

Is the school EduTrust-certified*? Under the scheme, private schools are assessed for their performance in areas such as school management and provision of student support services.



**Schools are required to obtain EduTrust certification in order to offer external degree programmes*

School Premises

Head down to the campus ground to check the facilities and support services. Observe the study environment too.



Fee Protection



Ask if there is any course fee protection so that you will be able to recover unconsumed course fees should the school close down.

Beyond Course fees



Find out about the course syllabus and materials, graduation rates and employment prospects. Approach the alumni to find out what they think of the school.

Teachers

Check if the teachers are qualified to teach the course.



Internship

If industry attachment is included, find out which organisation you will be attached to, the period of attachment and the alternative arrangement should the attachment become unavailable. Verify the information with the organisation as well.



Information for Students

Computing Aggregate Scores

Grade Conversion for N(A) Students who sat for GCE O-Level Examinations

O-Level Grade	N-Level Grade
A1, A2, B3	1
B4, C5, C6	2
D7	3
E8	4
F9	5



Our Vision: Learners who Learn For Life, Leaders who Light the Way

Our Values: • Respect • Responsibility • Integrity • Service • Excellence

Instructions to Students

Important

**ALL students are to submit:
Indication of Progression Options after GCE N-Level Release of Results
(FormSG)**

<https://go.gov.sg/bv2023-progression>

The purpose of the form is for the school to collate all progression options and to plan for students who wish to progress to Secondary 5 and to update MOE of **all students' post-secondary options.**

Submit the FormSG by **Fri, 22 Dec 2023, 5.00 pm**



Our Vision: Learners who Learn For Life, Leaders who Light the Way

Our Values: • Respect • Responsibility • Integrity • Service • Excellence

Important Deadlines

Application	Deadline
ITE 2-Year <i>Nitec</i> & 3-Year <i>Higher Nitec</i> (Enhanced Curricular Structure)	<ul style="list-style-type: none">Online submission https://www.ite.edu.sg/apply-for-ITE-courses Mon, 18 Dec 2023, 2.30 pm to Thu, 21 Dec 2023, 5.00 pm (for courses under aptitude-based admissions – check ITE application portal for interview details from Fri, 22 Dec 2023)
	<ul style="list-style-type: none">Release of ITE posting results (via ITE application portal) Fri, 29 Dec 2023, from 9.00 am
	<ul style="list-style-type: none">Acceptance/ Rejection of offer (via ITE application portal) Fri, 29 Dec 2023, 9.00 am to Wed, 3 January 2024, 11.59 pm



Our Vision: Learners who Learn For Life, Leaders who Light the Way

Our Values: • Respect • Responsibility • Integrity • Service • Excellence

Important Deadlines

Application	Deadline
DPP (receive Form N)	<ul style="list-style-type: none">Online submission https://www.ite.edu.sg/ Mon, 18 Dec 2023, 2.30 pm to Thu, 21 Dec 2023, 5.00 pm
	<ul style="list-style-type: none">Will need to attend 10-week preparatory course prior to commencement of Higher Nitec Course
	<ul style="list-style-type: none">Release of posting results (via ITE application portal) Fri, 22 Dec 2023, 2.00 pm
	<ul style="list-style-type: none">Acceptance/ Rejection of offer (via ITE application portal) Fri, 22 Dec 2023, 2.00 pm to Wed, 27 Dec 2023, 11.59 pmStudents with a confirmed place do <u>not</u> need to report to Bedok ViewStudents who do <u>not</u> have a confirmed place should report to Sec 5



Our Vision: Learners who Learn For Life, Leaders who Light the Way

Our Values: • Respect • Responsibility • Integrity • Service • Excellence

Important Deadlines

Application	Deadline
PFP	<ul style="list-style-type: none">Students must report to Bedok View for Sec 5 first <p>Tues, 2 Jan 2024 to Fri, 26 Jan 2024</p> <ul style="list-style-type: none">Notification of eligibility and application for PFP (Form P) in Jan 2024 after the release of 2023 O-Level Results
DPP (application after release of 2023 GCE O-Level Results)	<ul style="list-style-type: none">Students must report to Bedok View for Secondary 5 first <p>Tues, 2 Jan 2024 to Fri, 26 Jan 2024</p>



Our Vision: Learners who Learn For Life, Leaders who Light the Way

Our Values: • Respect • Responsibility • Integrity • Service • Excellence


Important Deadlines

Application	Deadline
Progression to 5N(A)	<ul style="list-style-type: none">• Report to Bedok View on Tues, 2 January 2024
Repeat 4N(A)	<ul style="list-style-type: none">• Students who wish to repeat Sec 4N(A) are to inform their FTs and indicate in the Progression Options Form after the release of the GCE N-Level results and submit by Fri, 22 Dec 2023, 5.00 pm https://go.gov.sg/bv2023-progression• The school will contact students to make the necessary arrangements for an interview.
All Students (after 2023 GCE N-Level Results)	<ul style="list-style-type: none">• Complete and Submit Progression Options (FormSG) to indicate progression to ITE EAE / ITE / DPP / PFP / 5N / Repeat 4N(A) by Fri, 22 Dec 2023, 5.00 pm https://go.gov.sg/bv2023-progression



Our Vision: Learners who Learn For Life, Leaders who Light the Way

Our Values: • Respect • Responsibility • Integrity • Service • Excellence



Success is not final,
Failure is not fatal;
It is the courage to
continue that counts.

Winston Churchill



Our Vision: Learners who Learn For Life, Leaders who Light the Way

Our Values: • Respect • Responsibility • Integrity • Service • Excellence